

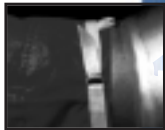
Chilled Water SPOT COOLER

with DuctSox® Fabric Ducts



Employee Comfort with Energy Management.

FABRIC LOOPS
sewn into DuctSox® tubes
attach directly to metal
hooks on the supply
plenum.



NYLON DuctBelt™
minimizes leakage between
DuctSox and the plenum.

ORIFICE
diameter and spacing is
designed especially for
optional flexible station
drop to provide optimum
air distribution.



**OPTIONAL FLEXIBLE
STATION DROP**
facilitate spot cooling
requirements.

**RADIUS ELBOW
CONNECTORS**
allow air to flow around corners
with less pressure drop. Transitions
and Y-connectors also are available.

CABLE SUSPENSION SYSTEM
with S-hooks attached to a
grommated fabric hem make
installation and removal fast
and easy.

FIRE RETARDANT FABRIC
in white, blue and yellow meets or
exceeds requirements of NFPA-255,
U.L.723, ASTM-E-84 and other safety
standards.

T-CONNECTOR/FABRIC PLENUM
can be manufactured to fit your air
handling unit's outlet to feed as
many duct runs as required.



ZIPPERS
accommodate maintenance and provide
flexibility by allowing you to reconfigure
your air dispersion system layout with
changing floor plans.



CHILLER MFG.™
Liquid Cooling

133 Harrison Avenue
P.O. Box 97
Jeffersonville, Indiana 47130
www.chillermfg.com
1.800.334.COOL



Dry Cleaning



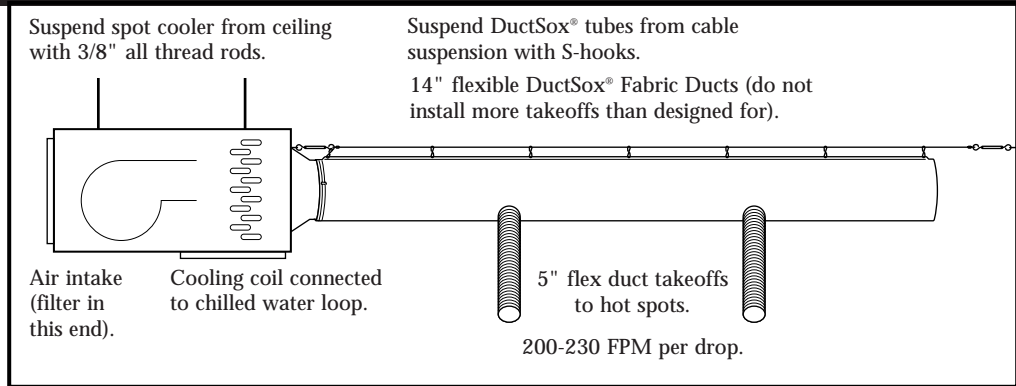
Laundry



Commercial

TYPICAL DUCT INSTALLATION FOR SPOT COOLER

- Call us to help design your system.
- The DuctSox® is one fifth the cost of conventional metal duct and as easy to install as a shower curtain.



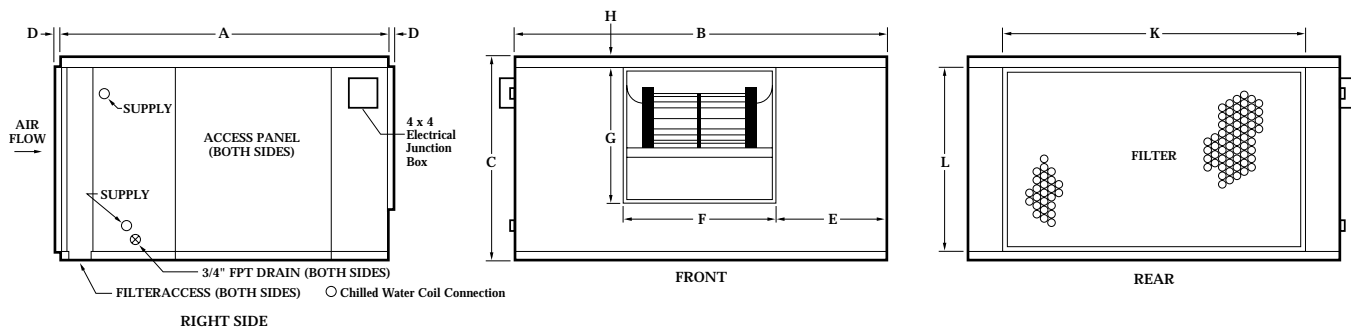
No need for chilled water? Then use our BHX Model, no water is required.

Specifications

Model	Water	C.F.M.	# of Spots Available		Tons Used	Voltage	Phase	Motor H.P.	Full Load Amps**
			Commercial	Dry Cleaners					
24-BHW-4		800	4	4	2	115	Single	1/4	5.3
36-BHW-4		1200	6	5	3	115	Single	1/3	6.7
48-BHW-4		1600	8	7	4	115	Single	1/2	8.7
60-BHW-4		2000	10	8	5	115	Single	1/2	8.7
90-BHW-4		3000	15	13	3.5 x 2	115/230	Single	3/4	13.2/6.6
Freon									
36-BHX-1		1200	6		3-Remote	115	Single	1/3	6.7
60-BHX-1		2000	10		5-Remote	230	Single	3/4	6.5
60-BHX-3		2000			5-Remote	230	Three		3.1
60-BHX-4		2000	15		5-Remote	460	Three	1-1/2	1.4
90-BHX-3D		3000			7.5-Remote	230 or 460*	Three		6.4/3.2*

*Ships 230 volt 3 phase - Field convertible to 460 volt 3 phase.

**Refer to Condensing Unit data for amp draw to be added to get total system amp draw.



Dimensions

Model	Unit						Blower Opening Outlet		Return Duct Conn.		Shipping Weight
	A	B	C	D	E	H	F	G	K	L	lbs.
24-BHW-4	37.00	32.50	18.00	1.00	10.20	.5	8.75	10.88	18.00	16.25	185
36-BHW-4	37.00	42.00	18.00	1.00	12.13	.5	12.25	10.88	27.50	16.25	205
48-BHW-4	39.00	43.50	22.00	1.00	12.19	.5	13.63	11.88	29.00	20.25	240
60-BHW-4	42.00	50.50	22.00	1.00	14.50	.5	16.00	13.88	36.00	20.25	290
90-BHW-4	52.50	54.00	27.00	1.00	17.44	.5	19.13	16.38	45.00	25.25	450
36-BHX-1	37.00	31.00	18.00	1.00	12.13	.5	12.13	10.88	27.50	16.25	215
60-BHX-1	48.00	39.00	23.00	NA	6.00	NA	23.88	16.07	32.50	12.38	298
60-BHX-3											
60-BHX-4											
90-BHX-3D	54.00	48.50	26.00		11.81				41.75	16.00	388